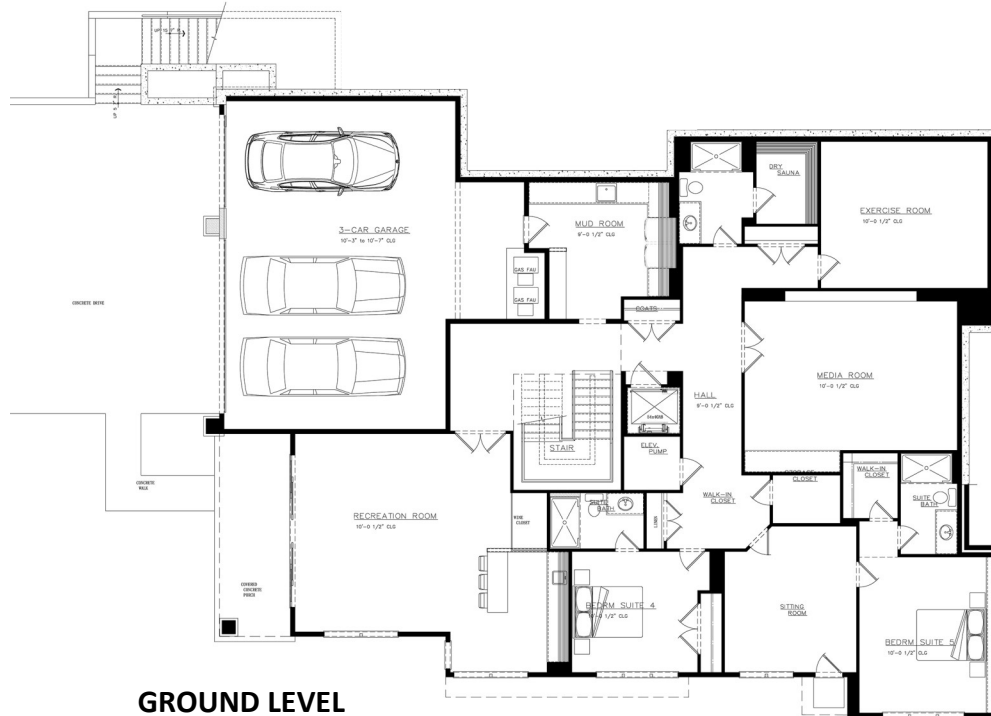




JOHN BUCHAN  
HOMES





2970 96th AVE NE | Clyde Hill WA 98004 | 6,691 SF on corner view lot

**Main Level:** Foyer, Kitchen, Great Room, Office, Primary Suite, 2 Bedroom Ensuites, Outdoor Living, Covered Deck, Powder Room, Elevator Ready.

**Ground Level:** 3 Car Garage, Mud Room, Exercise Room, Dry Sauna, Rec Room, Hall Bath, 1 Bedroom Ensuite, 1 Guest Ensuite w/ Sitting Area and its own entrance.